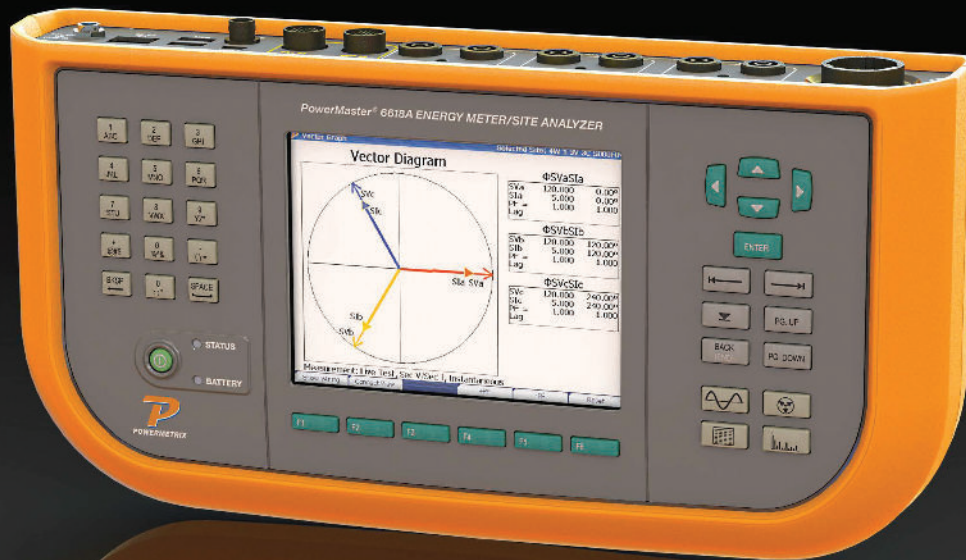


# POWERMASTER® MODEL 6618

*The Safest 3-Phase Analyzing Reference Standard in the World*



- ▶ International safety compliance: CE, CSA, CAT IV 600V, IEC 61010-1-2012, IEC 61010-2-030-2012
- ▶ Optional Remote Windows Tablet and Laptop Operation with Powermetrix Remote Manager
- ▶ ESD / EMI Protection
- ▶ Four language support

## R A D I A N

 **Research**

*Power and Energy Measurement Solutions*

**We Are The STANDARD**

Powermetrix extends its revolutionary line of handheld three phase analyzers with the PowerMaster® 6 Series, now with Powermetrix Remote Manager (PRM)®. PRM enables wireless control of essential and various metering site accuracy tests contained within the PowerMaster 6 Series.

PRM utilizes industry standard Bluetooth for wireless communication from any Windows based system to the PowerMaster up to 100 feet away in any metering environment including high EMF environments / substations! The remote capability of PRM provides additional testing scenarios for improved field operation and safety. Confidently execute true 3-Phase testing analysis and essential meter site accuracy tests remotely via a Bluetooth enabled laptop or tablet.

# POWERMASTER® Model 6618

The Safest 3-Phase Analyzing Reference Standard in the World

## Direct Inputs:

### AC Current:

3 Inputs: 0.1 to 20A, between 60 and 480VRMS

Phase:  $\pm 0.030$  Degrees 0.1 to 0.5A;  $\pm 0.010$  Degrees 0.5 to 20A

Resolution: 0.000001 A

### AC Voltage:

3 Inputs: Neutral Reference; 60 to 480VRMS

Phase:  $\pm 0.003$  Degrees

Resolution: 0.000001 V

## AC Probe Channels:

Channels: 6 Inputs for probes

Input Range: 30 mV to 3.2 VRMS

Accuracy: 0.1 % with  $\pm 0.003$  degrees + E probe

### Probes Accepted:

- Current: 1 mV/A to 300 mV/A
- Voltage: 4.2mV/V

## System Connectivity:

- Meter pulse input 1 input;  $<12$  V
- Standard pulse input 1 input; max 1 MHz,  $<12$  V
- Calibration pulse output; 1 MHz max, 5 V TTL
- USB ports for peripherals 2 type A (for keyboard, mouse, memory devices, etc.) 1 Mini-B Host
- Ethernet port 1 (for high-speed connectivity)

## Measurement:

### Energy:

- Whr, VARhr, VAhr
- $\pm 0.05$  % Accuracy (direct)
- $\pm 0.10$  % + E probe Accuracy (probes)

### Power:

- W, VAR, VA
- $\pm 0.05$  % Accuracy (direct)
- $\pm 0.10$  % + E probe Accuracy (probes)

Power factor: -1.00 to 1.00

Harmonics: Up to 50th harmonic, user selectable (FFT)

## Bluetooth Wireless Distances: (Data Transmission Quality)

Line of sight: 100 Feet / 30.5m

Inside a vehicle: 50 Feet / 15m

Inside a building: 50 Feet / 15m

## Safety:

- Safety certification IEC 61010-1-2012
- Measurement category CAT IV 600V
- Degree of protection IP-40
- CE Certification
- CSA Certification

## Other:

- Display resolution Full color transmissive VGA (640 x 480)
- Display size 5.7 inch
- Humidity 0 % to 95 % at 23 °C, non-condensing
- Dimensions (W x H x D) 13.0 x 6.71 x 3.02
- Weight 4.2 lbs (not including cables and accessories)
- Case Custom ABS plastic with Overmold
- 2-Year Warranty

## Power:

- Auxiliary power voltage input (charger)
- 100 to 240 V ac, 50/60 Hz.
- Internal battery Lithium Ion 2600mAh battery pack.
- Battery life (100% charge) 3-4 Hrs.  
(Charge time from 10 % state approx. 2-3 Hrs.)

## Language Support:

- English
- French
- Spanish
- Portuguese

## FEATURES

- Worldwide safety compliance standard support including CE, CSA, ANSI, IEC 61010-1-2012
- Optional wireless Bluetooth remote testing operation with Windows tablet or laptop
- Supported on Windows 10 / 11 with SQL Server 2019 Express. Operates on Windows 7 / 8 with SQL Server 2017 Express
- Worldwide testing capability (ANSI, IEC) with four language support
- CAT IV 600V Measurement Category



**A Product Family  
Owned by  
Radian Research**

3852 Fortune Drive, Lafayette, Indiana  
47905 USA | 765-449-5500

[powermetrix.com](http://powermetrix.com)

**R A D I A N**  
 **Research**  
Power and Energy Measurement Solutions